



AIR SUPPLY COMPRESSOR INSTALLATION MANUAL

VEHICLE APPLICATION:

BMW X5 (E70) 2006-2013

BMW X6 (E71) 2008-2014

PART NUMBERS:

OEM #: 37206799419/ 37226775479/ 37226785506

OES AMK #: A1957

IAM AMK #: A2018

GTIN code: 4260585260015



- ✓ highest OEM quality
- ✓ specification equal to OEM
- ✓ dedicated fit to specific vehicles
- ✓ powerful and robust design
- ✓ low noise emission
- ✓ easy installation

Please read the following manual carefully and stick to all instructions.

⚠ WARNING

WARNING: Use protection equipment, especially for feet, hands, eyes and ears.
Keep to all relevant accident prevention regulations and national regulations.

⚠ WARNING

WARNING: When jacking the car make sure the correct jacking points are used. Consult owner's manual, service manual or contact the car dealer. To avoid serious injury or death it is absolutely necessary not to perform any work under a not properly jacked car.

⚠ WARNING

WARNING: Burn hazard! The compressor could be hot from previous operation. Let it cool off before servicing.

⚠ WARNING

WARNING: The air suspension system is under pressure. Prior to disassembly disconnect power and relieve pressure. Consult owner's manual on how to disconnect the battery.

⚠ CAUTION

CAUTION: Damage to the vehicle and air suspension system can be incurred if work is carried out in a manner other than specified in the instructions or in a different sequence.

⚠ Only qualified personnel of a service workshop are to perform repair work on a cars air suspension system.

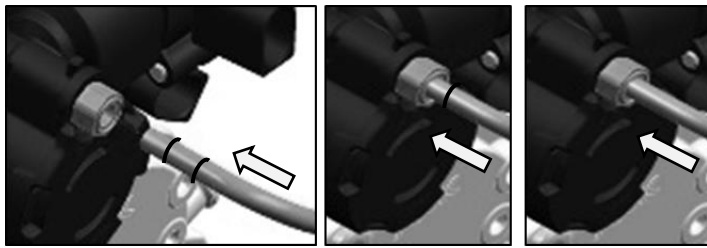
⚠ Use the diagnostic software of the car manufacturer and follow its instructions.



Torques

- mounting screw M6x12 for bracket assembly to compressors 10,5 + 1 Nm
- isolation/decoupling on mounting point of compressor to car 11,5 + 0,5 Nm
- all other nuts and bolts according to manufacturer's specification

1. Reconnect the air outtake hose coming from the valve block to the compressor by using new fitting mounted on new compressor.



| Designation VOSS | Hose diameter |
|---------------------|---------------|
| Thread M8x1 | 4 mm |
| Thread M10x1 | 6 mm |
| Thread M12x1 | 8 mm |

⚠ Follow instructions of the air connector manufacturer (www.voss.de)

2. Fasten compressor assembly to the car using three screws.
3. Reconnect air intake hose with fitting to the hose leading to the filter.
Keep clean. Do not use grease!
4. Reconnect both air lines leading from the car resp. the air struts to the valve block
5. Reconnect electric cable to the valve block.
6. Reconnect both electric cables to the compressor (motor cable and solenoid valve cable)



MOTOR



SOLENOID VALVE



POLARITY



PLUGS



⚠ Do not allow dirt, dust, water to enter electrical connections (sockets and plugs)

7. Fasten screws of the small black plastic bracket holding the four black tubes.
8. Reconnect both electric cables to the compressor (motor cable and solenoid valve cable)

1. BEFORE REPAIR

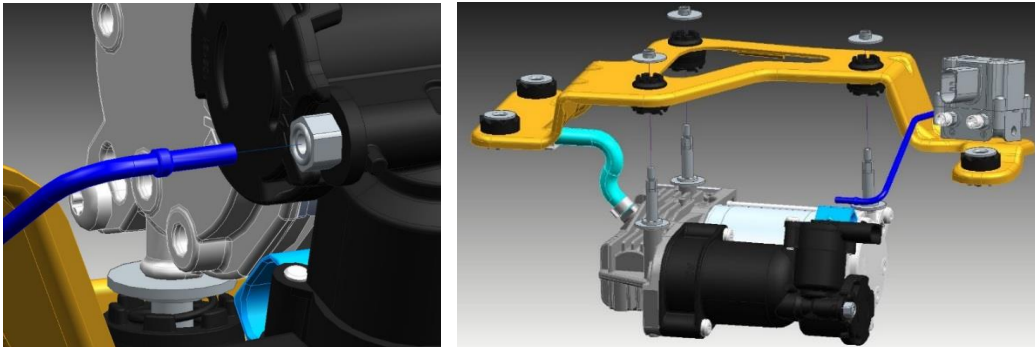
| No. | IMPORTANT OPERATIONS TO BE PERFORMED | CHECKED |
|-----|---|---------|
| 1 | Inspect whole air suspension system for air leakages (air struts, air springs, pipes, valve block, air connectors etc.). If necessary follow manufacturer's instructions for repair of broken components to avoid damage of compressor or loss of warranty. | |
| 2 | Inspect whole electrical infrastructure of air suspension system (relay, electrical wires, electrical connectors etc.). If necessary follow manufacturer's instructions for repair of broken components to avoid damage of compressor and loss of warranty. | |
| 3 | Start repair work only when you have read and understood all information required for repair. | |
| 4 | Use only spare parts released by car manufacturer or AMK. | |
| 5 | Do not damage air lines and cables. | |

2. REMOVAL OF OLD COMPRESSOR ASSEMBLY

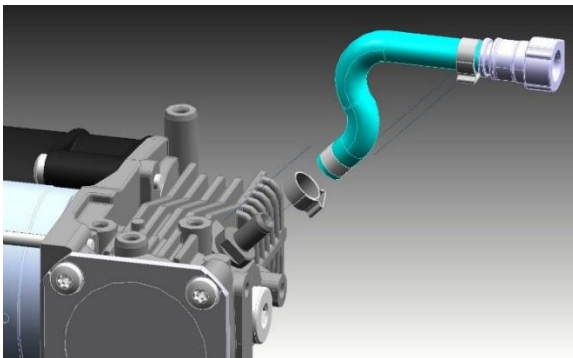
1. Disconnect both electric cables from the compressor (motor cable and solenoid valve cable)
2. Disconnect electric cable from valve block
3. Disconnect both air lines from the valve block
4. Disconnect fitting of air intake hose
5. Remove screws of the small black plastic bracket that holds the four black tubes running under the compressor to get more space. (no picture)
6. Remove the three screws holding the compressor bracket to the car and take out whole assembly (bracket with compressor and valve block).



7. Remove air outtake line from compressor and remove fitting from air outtake line. Leave other end of outtake line attached to the valve block.
8. Remove three bolts that hold the compressor to the assembly



9. Remove air intake hose from the compressor



3. ADDITIONAL INSPECTION UPON COMPRESSOR REMOVAL

⚠ Inspect compressor to identify root cause of the compressor failure and breakdown.

- If there is corrosion in the air intake check air intake pipe and filter, as there might be water. If necessary replace damaged elements.
- If the compressor has a burning smell, check relay and electrical connections. If necessary replace damaged elements.
- If the compressor has a burning smell, check all components of the air system (air lines, air springs, struts, valve block) for leaks. If necessary replace damaged elements.

| No. | IMPORTANT OPERATIONS HINTS | CHECKED |
|-----|---|---------|
| 1 | Do not remove any screw, air fitting, pipe or any other accessory from the new compressor, as it may cause damage and loss of warranty. | |
| 2 | Do not allow dirt, water or grease to enter the air suspension system during repair. Clean air intake pipe. | |
| 3 | Use only spare parts released by car manufacturer or AMK. | |
| 4 | Do not damage air lines and cables. | |

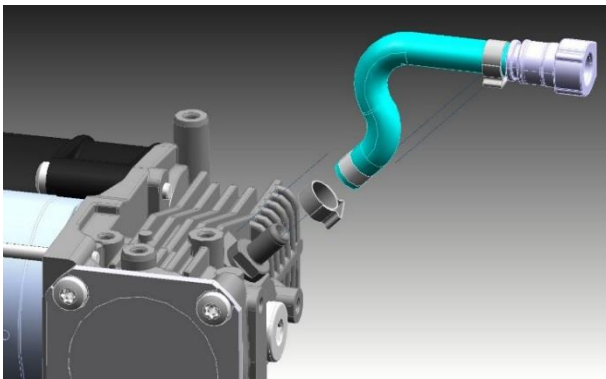
| | | |
|---|---|--|
| 5 | It is mandatory to replace relay, according to car manufacturer service instruction. | |
| 6 | It is mandatory to replace air filter, according to car manufacturer service instruction. | |

4. INSTALLATION OF NEW COMPRESSOR

WARNING

WARNING: Risk of damage! Perform proper assembly of mounting brackets, compressor hardware, compressor assembly, isolation kits using specified below torques.

9. Install air intake hose to the new compressor



10. Install three new bolts to the new compressor

11. Fasten the compressor to the bracket considering the right sequence of the decoupling / isolation (AMK # 404686)

